

ECA NSW BRANCH

Newsletter

JULY 2020

EVERYONE who works with children in the early childhood workforce across NSW has been providing high-quality education and care during these difficult weeks and months working with COVID-19.

You educators and teachers – including out-of-school-hours educators – have always been there to support communities, families and their children throughout NSW. You have led with the qualities of professionalism and courage and demonstrated the warm, respectful relationships for which you are known.

Your commitment to young children and their families throughout these challenging times is a tribute to the professionalism and determination that characterises the early childhood workforce.

Significantly much of this work has gone on without acknowledgement or recognition. Each and every day, you show the true value of being an early childhood educator.

We really appreciate all the hard work you do.

It is time for everyone to say,

Thank you



**Early Childhood
Australia**

New South Wales Branch

ECA NSW EXECUTIVE

President

Carol Burgess

Vice President/Treasurer

Natalie Grenfell

Secretary

Tracey Dooner

Executive

Ian Alchin

Merise Bickley

Gabby Holden

Anita Jovanovski


Jan Langtry


Chris Legg


Marina Papic

Laura Sportelli

ECA NSW BRANCH

 0429 779 039

 earlychildhoodaustralia.org.au

 office@nsw.earlychildhood.org.au

ABN 92 495 446 647

Farewell
**Nan
Greig**

At the ECA AGM in May we farewelled long time Executive member of ECA NSW, Nan Greig.

Nan has held a position on the ECA NSW Executive for 15 years and was Treasurer for the past 6 years.

We thank Nan for her long-term commitment to ECA NSW and her valuable contribution to the committee in advocating for children and families.



ECA NSW Annual General Meeting

ECA NSW held our first AGM by Zoom on 7 May 2020. It was a successful meeting and we welcomed many new faces to the meeting. Our new ECA NSW Executive were elected on the night.

EXECUTIVE

President

Carol Burgess

Vice President/ Treasurer

Natalie Grenfell

Secretary

Tracey Dooner

Executive

Ian Alchin

Merise Bickley

Gabby Holden

Anita Jovanovski

Jan Langtry

Chris Legg

Marina Papic

Laura Sportelli

REGIONAL REPRESENTATIVES

Hunter

Amanda Holt

Illawarra/South Coast

Linda Windley

New England

Tracey Dooner

Riverina

Tracey Snow

Far North Coast

Katie Pennant

Bathurst Region

Kelly Tribolet

Central Coast

Selma Wastell

Virtual Office Manager

Julia Ham



A copy of the
ECA NSW Annual Report
including the financial
report can be downloaded
HERE

Conversations ON ZOOM with

Sharon Gudu

Executive Director
Quality Assurance and
Regulatory Services



Kathleen Forrester

Executive Director
Early Childhood Policy
and Programs



With the change in structure of the Department of Education Directorate of Early Childhood, we have invited Sharon Gudu and Kathleen Forrester to meet with our members to discuss the new look Directorate and the future of Early Childhood Education in NSW from the NSW State Governments perspective.

This is a **MEMBER ONLY** event.

When: Aug 6, 2020 06:30 PM

To register in advance for this meeting, click **HERE**.

After registering, you will receive a confirmation email containing information about joining the meeting.



Office of the
Children's Guardian

Making NSW child safe

The Office of the Children's Guardian (OCG) is proud to release the Guide to the Child Safe Standards. It supports organisations to implement the Child Safe Standards and put in place strategies to keep children safe. The Child Safe Standards were recommended by the Royal Commission into Institutional Responses to Child Sexual Abuse and endorsed by the NSW Government.

This Guide will help your organisation progress through evidence and practical examples to reinforce a child safe culture. This is part of an ongoing approach to improving service delivery to children, developing skills and changing organisational culture.

We know some organisations are already integrating the National Principles for Child Safe Organisations, which were based on the Standards, into your organisation. The OCG considers organisations that are implementing the National Principles would also be implementing the Child Safe Standards.

Keeping children safe is a shared responsibility

Organisations need to ensure the safety of children is the focus of their organisation: from the decisions made at board level by leaders, to the services provided by front line employees, including volunteers. · Find out more about the Child Safe Standards · Discover more resources on the Child Safe Standards. We encourage you to share the Guide with your networks. You can also follow us on LinkedIn, Twitter and Facebook to learn more about applying the standards and links to our free training and resources.

If you have any questions about the Guide, or how to develop a child safe culture in your organisation, contact the Child Safe Coordinator (for the Early Education sector, Rachel Norman) on childsafe@kidsguardian.nsw.gov.au Register your interest in attending Child Safe Standards Workshops here <https://register.eventarc.net/e/44259> You will receive an email when the workshops dates are available.

TAFE NSW

in response to the COVID-19 pandemic and in conjunction with the NSW Government, is offering a number of fee-free* short courses.

Courses can be completed in just days or weeks and offer practical skills and experiences across a range of industries.

Whether or not you've studied at TAFE NSW before, we encourage you to explore some of the courses available today.

Our course list is updated often, so be sure to check back regularly to find a fee-free* short course that's right for you.

Our Statement of Attainment in Leading Teams has been particularly popular with early childhood educators.

View the list of courses [HERE](#)



Education
Standards
Authority

TEACHER ACCREDITATION IN NSW

Teacher accreditation is a structure through which teachers meet the Australian Professional Standards for Teachers (the Standards) and maintain their practice. Teacher accreditation ensures the integrity and accountability of the teaching profession in NSW. This article will give a brief overview of teacher accreditation requirements at different career stages.

Working towards Proficient Teacher accreditation

After completing an ACECQA approved degree, early childhood teachers entering the profession are accredited as provisional. Once provisionally accredited, teachers develop their teaching practice and work towards achieving Proficient Teacher accreditation, which is mandatory for all NSW teachers. Achieving Proficient Teacher accreditation involves developing an understanding of the knowledge, practice and professional engagement identified by the Standards.

A NESA Accreditation Supervisor is allocated to supervise early childhood teachers, working in services not in schools, to achieve Proficient Teacher accreditation about 18 months before their due date. Read the NESA Teacher Accreditation Authority procedures for more information on finalising Proficient Teacher accreditation.

Maintaining accreditation

Maintaining accreditation requires teachers to continue to meet the Standards at Proficient Teacher and critically reflect on their teaching practice to improve child learning. Proficient Teachers are required to complete 100 hours of professional development (PD) in each maintenance period including:

- NESA Registered PD designed and delivered by an endorsed provider; and
- Teacher Identified PD, which is any professional learning activity that enhances and strengthens a teacher's practice and aligns to the Standards.

As part of their 100 hours of PD, early childhood teachers accredited at Proficient Teacher between July 2016 and July 2018 only need to complete 20 hours NESA Registered PD in their first maintenance period. Teachers accredited after July 2018 are required to complete 50 hours of NESA Registered PD as part of their 100 hours of PD.

Early childhood teachers finalising their Maintenance of Proficient Teacher can refer to these tips from NESA below. These tips can assist teachers to stay on track to complete their requirements:

- check how much PD you have completed by check your PD Progress Report in your NESA online account (eTAMS)
- ensure that your NESA Registered PD is evaluated
- ensure all of your Teacher Identified PD is logged in your NESA online account. Professional reading or research to improve teaching or educational leadership or attending forums of the broader teaching profession might be activities to log if you need to complete more PD, search for courses in your NESA online account or check out the free and low-cost providers on the NESA website
- ensure that your employment details are up to date and that you have paid your annual fee and have a valid Working With Children Check.

eTAMS Help is a great tool that has useful articles and videos that show you how to complete tasks in your NESA online account.

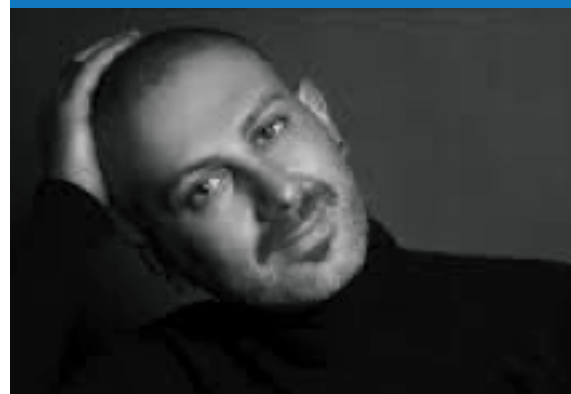
If you have any questions about your accreditation, you can contact NESA by phone (1300 739 338) or email to: ptenquiry@nesa.nsw.edu.au

Save the **DATE**

RIVERINA ECA

will hold a mini conference at
Tumut on 19 September with
guest keynote speaker:

Anthony Semann



Organised by ECA Riverina and
Snowy Valleys Children's
Services group

WATCH THIS SPACE...

**The Governance Structure of
Early Childhood Australia is
currently under review.**

We will be encouraging all member to participate in a member's consultation evening in August.

This will give all ECA NSW members the opportunity to decide the way forward for Early Childhood Australia National and state branches.

A date is still to be set, but we encourage all members to attend this meeting.